



# SS San Fabian (+1942)

## Details

### general

nationality: [british](#)  
 purpose: [transport](#)  
 type: [tanker](#)  
 propulsion: [steamer](#)  
 date built: 1922

### details

weight (tons): 13031 grt  
 dimensions: 168,2 x 21,2 x 12,9 m  
 engine: 3 steam [turbines](#) geared to 1 screwshaft  
 power: 978 n.h.p.  
 speed: 10 knots

### about the loss

cause lost: [torpedo](#)  
 date lost: [27/08/1942](#) [dd/mm/yyyy]  
 casualties:

### about people

builder:  [Armstrong W. G. & Whitworth Co. Ltd., Newcastle-Upon-Tyne](#)  
 owner:  [Eagle Oil & Shipping Co. Ltd., London](#)  
 captain:

### about the wreck

depth:  
 orientation:  
 protected:  
 war grave:


### updates

entered by: [Allen Tony](#)  
 entered: 21/01/2008  
 last update: [Vleqqert Nico](#)  
 last update: 29/09/2009

## Position

[Vleqqert Nico](#) 29/09/2009

latitude: 18°09'0X" N  
 longitude: 074°38'0X" W  
 division: 1'=60"  
 remarks: Position is PA.  
 ref. used: [www.uboot.net](#)

 [add position to my marks](#)

show neighbour. wrecks: [members only](#)  
[check AIS](#)

[insert new position](#)

## The Wreck today

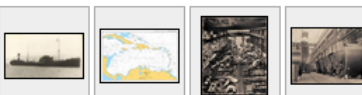
[insert wrecksite info](#)

## Pictures



[Vleqqert Nico](#) 29/09/2009  
[San Fabian](#)

copyrights: [Unknown - onbekend - inconnu](#)  
 ref. used: [www.helderline.nl](#)



[insert new picture](#)

## History

[Allen Tony](#) 03/05/2009

San Fabian SS was a British Steam Tanker of 13,031 tons built in 1922. On the 27th August 1942 when on route from CURACAO for KEY WEST & UK carrying a cargo of 18000 tons of fuel oil she was torpedoed by German submarine U-511 and sunk. 26 crew lost from a total of 59.

ref. used: [www.ubootwaffe.net](#)

[insert new history](#)

## Documents

[insert new document](#)

## About Owner(s)



[Eagle Oil & Shipping Co. Ltd., London](#)  
 Eagle Oil and Shipping Co. was merged into Shell International Petroleum Company in 1959.

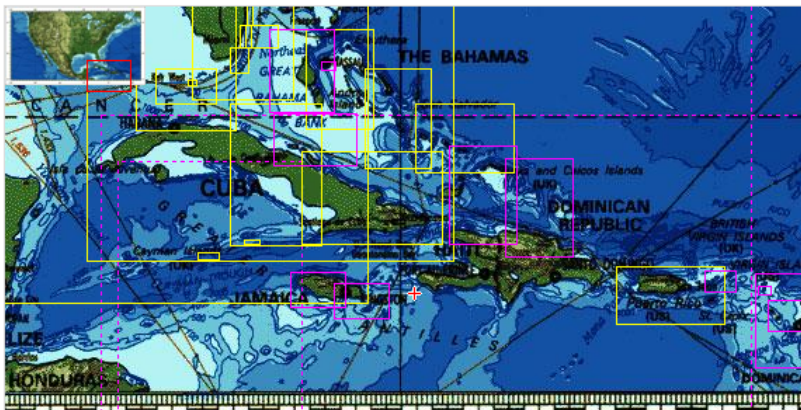
## About Builder(s)



[Armstrong W. G. & Whitworth Co. Ltd., Newcastle-Upon-Tyne](#)

The company was a major British manufacturing company of the early years of the 20th century. Armstrong Whitworth engaged in the construction of armaments, ships, locomotives, automobiles, and aircraft.





75°